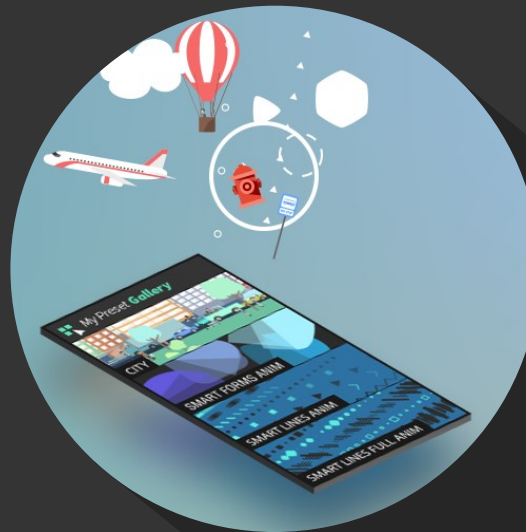


My Preset **Gallery**



Installation Guide

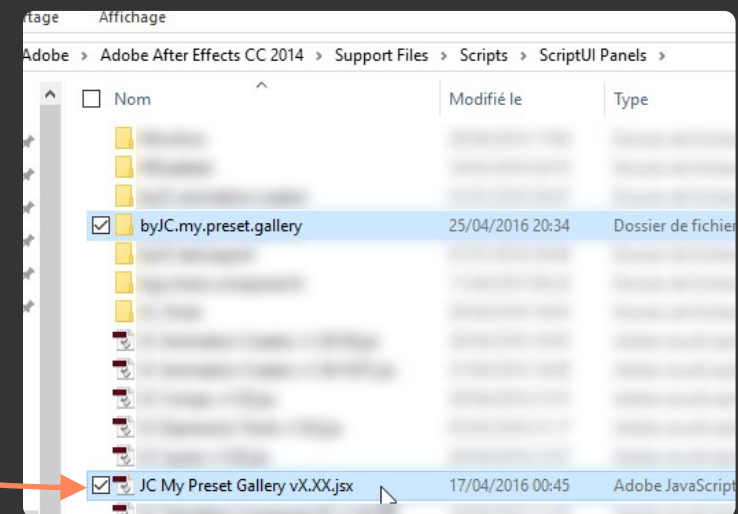
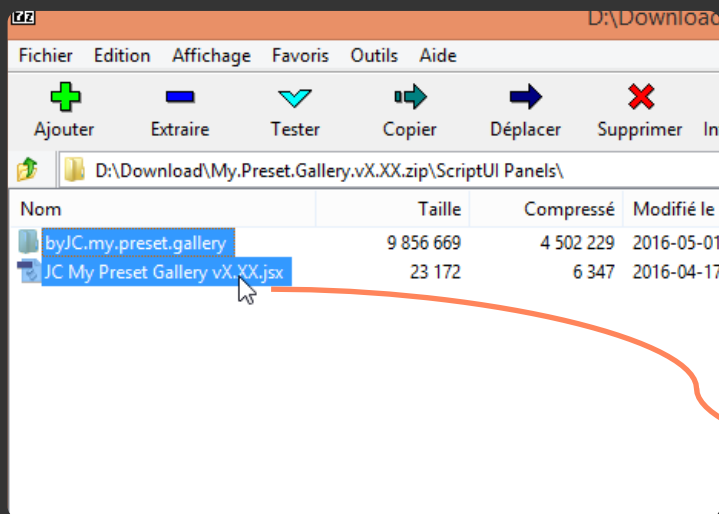
1 Close After Effects



2 Extract the contents of the ScriptUI Panels folder in the ScriptUI Panels folder of Adobe After Effects

On Windows this folder is located in: «[After_Effects_Install_Path]/Support Files/Script/ScriptUI Panels/»

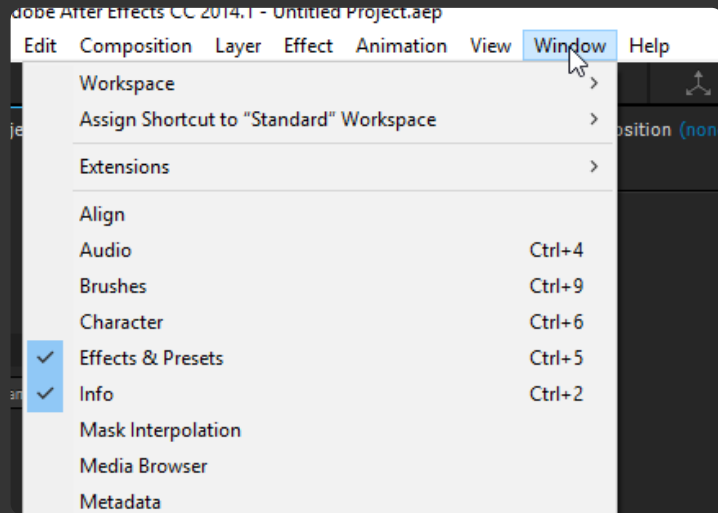
On Mac Os this folder is located in: «[After_Effects_Install_Path]/Scripts/ScriptUI Panels/»



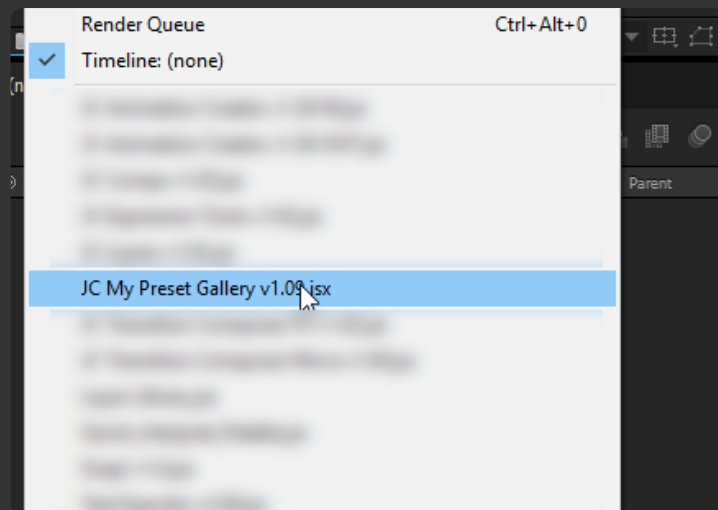
3 Open After Effects



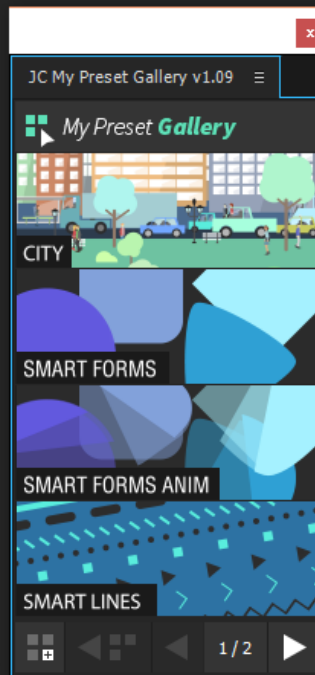
4 Go to **Window** menu



5 Enabled **JC My Preset Gallery**



Enjoy!



Follow me!



facebook.com/aescripts.byjc



videohive.net/user/byjc/portfolio?ref=byjc



aescripts-byjc.com